

# GERHARD SCHUTTE & SAMUEL CHURCH SMITH



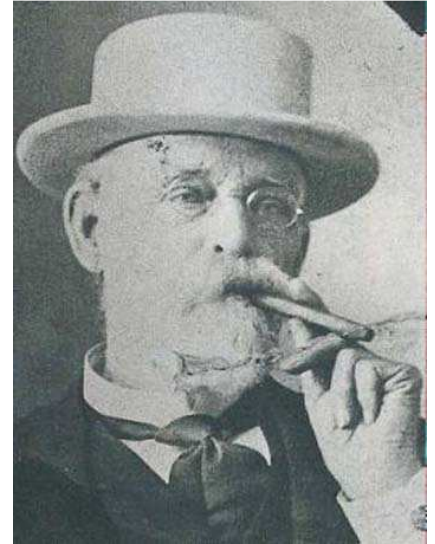
## GERHARD SCHUTTE

Responding to railroad land advertisements, Schutte came west in 1886 to build a town. His elaborate Queen Anne - style family home now is Neiman's Restaurant.



## CARLSBAD HOTEL

Schutte and Smith built this hotel in 1887 but it burned down in 1894.



## SAMUEL CHURCH SMITH

Schutte's partner in the Carlsbad Land and Mineral Company built a simple cottage for his family on Beech Ave.



## SMITH FAMILY AT HOME

Bad economic times forced Smith to move to San Diego in the early 90s.



## CARLSBAD SCHOOL

Teacher Hattie Reece, back row, right, married Gerhard Schutte's son Alfred. Florence Shipley attended this school in 1887.