

Congress of History of San Diego and Imperial Counties Annual Conference

This year the Congress of History's Annual Conference theme will be "**From Baldwins to Boomers: Celebrating the 125th Anniversary of San Diego County's Great Railway & Real Estate Boom, from 1881 to 1890**". Lecture topics will focus on the tremendous impact the railroad had on San Diego County development. We are very fortunate that it will be held locally at Cal State San Marcos on March 3 & 4. All are welcome to attend. The cost is \$30 per person, \$25 for seniors over 65 years of age or \$15 for students, this pays for both days as well as a 55 page book entitled "**The Railroad Stations of San Diego County : Then and Now**" by James N. Price. To send in your reservation mail your check made out to *Congress of History*, to Congress of History Conference Registration c/o Linda Canada, 5093 Via Cinta, San Diego, CA 92122.

The Importance of Railways to San Diego County Development **Susan Gutierrez**

Rail service came to fruition in 1883, when the California Southern and Santa Fe railroad finally connected San Diego to San Bernardino and then with the rest of the country. This first rail connection was short lived as the tracks were washed out by severe winter storms. It was a few years later that a regular established rail connection became a viable way of transportation. Until that time San Diego was just an out of the way town bordered by ocean, desert, and Baja California and was removed from any main transportation routes and towns like Carlsbad did not yet exist. It was a two way problem lack of population in the county and city meant it was not economically feasible to establish rail service and without rail service the people were hesitant in moving to an area that was so isolated and lacking in opportunities to make a living. There was no profit involved in providing transportation to an area with a small population or a reason to draw people there.

Many of those who did make the arduous

journey did so for their health. People arriving or departing from San Diego in 1882, came by stage, horse, or steamship. Several times a week stage service departed for Los Angeles. Depending on the weather, a minimum two day journey ensued before travelers arrived in Los Angeles. Once there they still needed to make connections from that point onward. Steamship service to and from San Diego was usually available every couple of weeks, having first stopped in Los Angeles or San Francisco regardless if the steamship had first passed San Diego on the way to those port cities or not. San Diego was not considered a prime destination spot and consequently rated last for transportation services. This fact alone made the city an isolated end of the world place, with a very small population. Once the long dreamed of and promised direct train service from San Diego to the rest of the country occurred, a jump in population resulted, as noted in the 1880 San Diego County census total of 8,618 residents versus the 1890s total of 34,987.

Carlsbad's Historic Buildings

Did you know that the old train station located at 400 Carlsbad Village Drive was once Carlsbad's original Santa Fe Depot? Built in 1887 this building is one of the few pre 1900 stations left in the county and on its original site. Did you know that the grey stone in the wall in front of the Army Navy School came from Calavera hill? For more information about historic Carlsbad buildings check out the brochure, "*Historic Carlsbad, A Self Guided Tour*", compiled by the Carlsbad Historic Preservation Commission. Brochures are available at all Carlsbad City libraries and at Magee House.

Donations....

We gratefully accepted several lovely donations from CHS members:

Lucia Sipple, many volumes of the San Diego Historical Society Journal, a very nice addition to our research library. Thank you!

Sister Freeman, of the Gastelem Family- photos from her family – Thank you!

New Members....

We welcome our newest members to the Carlsbad Historical Society: John and Dianne Frazee, Josephine Del' Homme, Leo and Dianna Pacheco, Sharon White, Doctor and Mrs. Jerry Colling, and Darrell Byington.

If you know of anyone who is interested in Carlsbad History, please feel free to share your newsletter with them or request one be sent to them, just call our office at 760-434-9189. A membership application is also included in this newsletter and on our website, www.carlsbadhistoricalsociety.com.

North San Diego County History...

How many of North San Diego County's 25 places of historic interest have you visited? The Council Interpreting North County History (CINCH) has produced a brochure listing all 25 places of interest. Each site is listed with a brief introduction, visitor information and a locator map. For your free copy please stop at the Magee House.

Books...

Have you ever wondered what was the difference between two of Carlsbad's history books, *Seekers of the Springs* by Marge Howard Jones and *Windows on the Past* by Susan Schnebelen Gutierrez? Well now is your opportunity to find out. The Carlsbad Friends of the Library have donated one case of Marge's book to the historical society, and we will be able to sell the books for \$5 each. We also have been able to purchase Susan's book at cost from the Carlsbad City Library, and will be able to sell those books for \$25 each. There is no limit on the amount of books purchased.

New Additions to Magee House Museum...

We have several new additions to our museum that we are very excited about.

The most important is our new docent and museum manager Sarah Schrell. Sarah is a history major at Cal State San Marcos, and in the few short weeks she has been with us, has already straightened up our office, files and computer records. We are most appreciative of her work, and are thrilled to have her as part of our group. Sarah is enthusiastic and loves history, a great asset for all of us. So please stop by and introduce yourselves.

New mannequins were purchased in January, enabling us to better display our large collection of clothing. So if vintage clothing is your interest, plan a visit to the museum soon.

We recently upgraded our computer system. Now we have one for business purposes and another for interactive displays.

Community Outreach...

Speaking of a big thank you, the Carlsbad Historical Society Board of Directors wants to thank every one that volunteered to staff our booth during two different fall 2005 community events. We attended the Carlsbad City Library Learning Fair in September and also the Fall Festival at Leo Carrillo Ranch Historic Park in November. We received lots of positive feedback from the community and the Board is very thankful for all the volunteers help.

Volunteers needed....

Newsletter Chair- quarterly

Third Grade School Tour Docents- scheduled for June

Victorian Tea Docents- schedule varies

Display Committee- bimonthly

New Hours ...

Our Museum recently extended its hours and is now open Friday 12- 4 p.m. and Saturdays 10 a.m.-4 p.m.

Upcoming Events

May 20, 2006 from 10 a.m. to 2 p.m. – mark your calendars, a membership event featuring local artists is in the planning stages at Magee Park. More information will be sent out in March.

Smith Family Descendant passes...

Mary Evans Johnson, a life member of the Carlsbad Historical Society passed away December 22, 2005. Mrs. Johnson was the great granddaughter of Samuel Church Smith, a founder of the Carlsbad Land and Water Company and the original owner of Magee House. Her grandmother Lillian Smith was married in the parlor of Magee house in 1887. Mrs. Johnson was an accomplished pianist, scholar and lecturer. She will be missed.



About Our Organization...

The Carlsbad Historical Society increases and enhances the knowledge of the area's history. CHS assures and maintains cultural traditions of the community; works with the City of Carlsbad on cooperative preservation, restoration and display of historical resources; and solicits the help of the community in acquiring historical items and property.

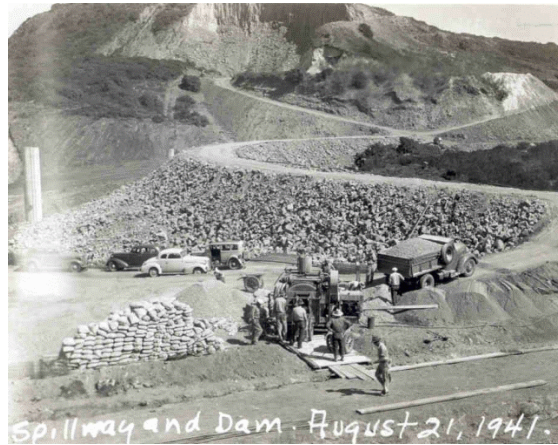
Calavera Dam Construction



In 1940 the Carlsbad Mutual Water Company began construction of the Calavera Dam to store San Luis Rey well and river water during the off peak season. The site was chosen because it contained white silica sand, which meant a minimum of seepage and because of its proximity to rock and sand from a nearby quarry. The Dam is considered historically significant because it visibly demonstrates how our community solved a water supply problem.



It was originally named Fraser Lake in honor of Sam Fraser a retired Army engineer who was superintendent of the Carlsbad Mutual Water District in 1939. Before construction of the dam, Carlsbad's water was pumped from the San Luis River valley to a series of reservoirs. Fraser proposed building the dam to store water off- season, and the shareholders in the Carlsbad Mutual Water Company approved a water bond for \$10,000 to purchase the land from the Kelly family. 20-inch redwood pipes were used to carry the water to and from the dam. The dam served the community for about 16 years.



The rock in the background was used for local construction in Carlsbad for many years. An example of this material is displayed in the wall in front of the Army Navy Academy on Highway 101.



(1941 Photos by Carlsbad Mutual Water Company)

Carlsbad Historical Society

258 Beech Street
Carlsbad, CA 92008

PHONE:
(760) 434-9189

E-MAIL:
cbadhistory@yahoo.com

Open Friday 12:00-4:00 and
Saturday 1:00-5:00
Private Tours with Tea are
given on Tuesday and
Thursday
BY APPOINTMENT ONLY

www.carlsbadhistoricalsociety.com

Carlsbad Historical Society Membership Application

Name _____

Address _____

Phone Number () _____

Email Address _____

Individual \$25 _____ Family \$35 _____

Student \$5 _____ Lifelong \$250 _____

Business \$35 _____

Yes I would like to volunteer, call me regarding ____ Membership
____ Display Committee ____ Docent ____ Tours
____ Fund Raising ____ Publicity

CHS Board of Directors

President: Susan Gutierrez
1st Vice President: Hubert Smith
2nd Vice President: Phyllis Demy
Secretary: Lenore Bouras
Treasurer: Ginny Unanue
Members-at-Large: Eleanor Call

Committee Chairs

Membership: Hubert Smith
Displays: Marge Howard-Jones
Graphic editing: Germán Gutierrez
Teas and Tours: Ginny Unanue
Docents: Sarah Schrell

Carlsbad Historical Society

Magee House and Museum
258 Beech Street
Carlsbad, CA 92008

